

Food Safety



Animal Health



Plant Health



Food
Supply Chains



Public –Private Partnership as a means to Improve Animal Welfare Globally

Dr Ann Wilkinson, President, SSAFE

SSAFE's Vision



To integrate food safety, animal health, and plant health across food supply chains to improve public health and well-being

Animal Welfare is one of many important goals in an integrated food supply chain

SSAFE's Mission



To foster the continuous improvement and global acceptance of internationally recognized food protection systems and standards through public-private partnerships

SSAFE is not a standard setting body

SSAFE Members:

- 1 Represent diverse perspectives from farm to table
- 2 Share a focus on the safety of the global food supply
- 3 Agree that food safety is best achieved through cooperation
- 4 Support the International Governance apparatus as the framework for food safety systems to facilitate the safe trading of foods
- 5 Recognize that “Trading Safely” provides consistency and opportunities for developed and developing regions
- 6 Value collaborations with public entities in the provision of training resources to those that need them most

Our Strategy



Build

Create and support **collaborative** platforms that bring stakeholders together to develop science-based strategies to facilitate the production and distribution of safe food



Impact

Support and promote internationally recognized science-based **Harmonization of Standards**, such as those referenced in the WTO/SPS agreement (i.e., CODEX, OIE and IPPC), as well as ISO 22000, that protect human animal and plant health



Grow

Seek to improve the global food system through **Capacity Building** (stimulating education and improving local infrastructures) and promoting **Social Responsibility** through economic growth that conserves the environment and natural resources as well as provides **fair** employment opportunities

Public-Private Partnerships

SSAFE has Memorandums of Understanding (MOUs) with:

- Food and Agriculture Organization of the United Nations (FAO)
- World Organization for Animal Health (OIE)
- Global Food Safety Initiative (GFSI)

Additionally, SSAFE has:

- Observer Status in CODEX
- Liaison Status in ISO

Membership



Nestlé



MICHIGAN STATE
UNIVERSITY



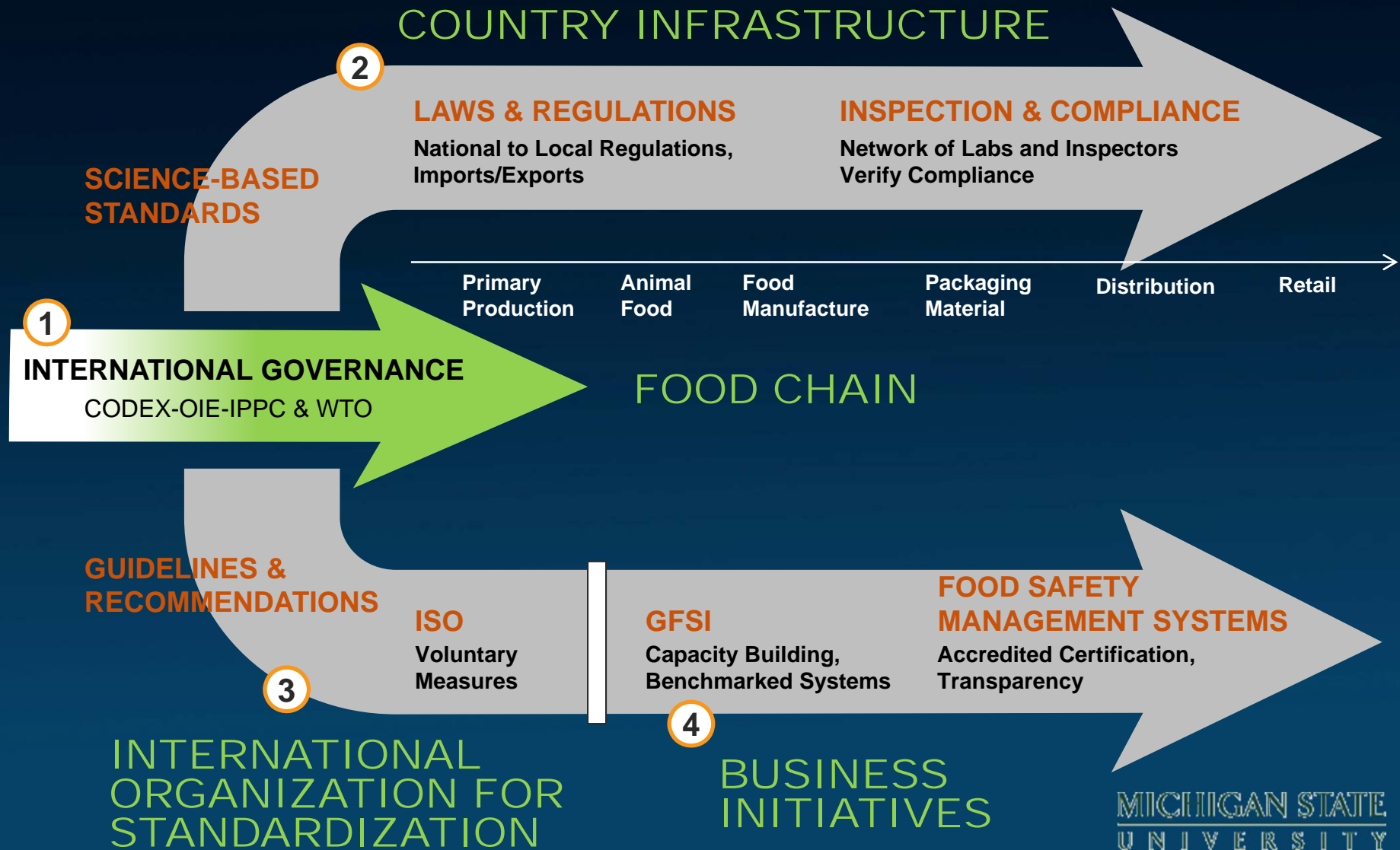
Dairy for life



DANONE

Partnership

Global-to-local food safety systems



1

INTERNATIONAL GOVERNANCE

CODEX-OIE-IPPC & WTO



WTO

Gives legal standard setting authority to OIE, CODEX and IPPC

Sanitary Phytosanitary Agreement (SPS)

OIE

CODEX

IPPC

Animal Health

Food Safety

Plant Health

Animal Welfare

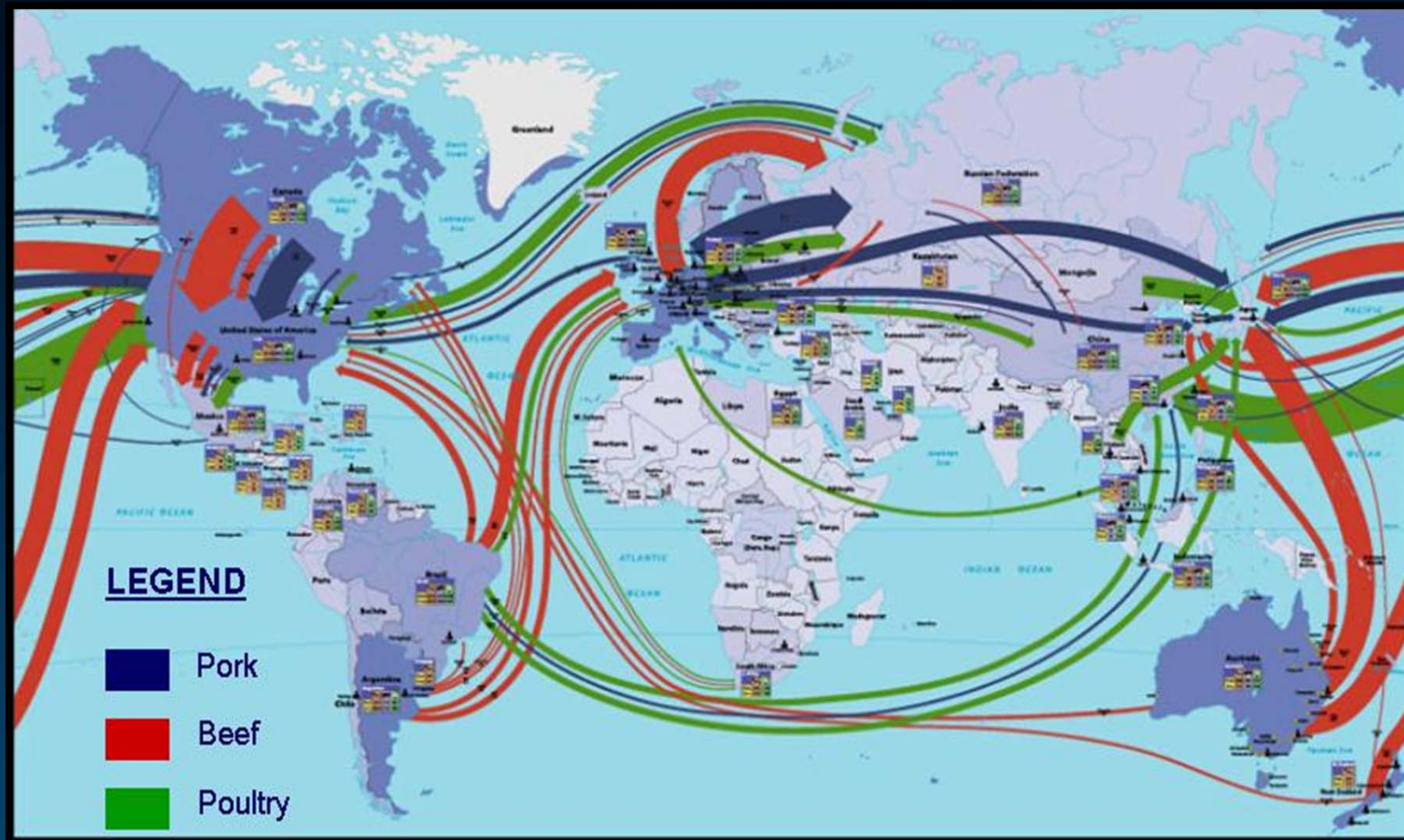
Evidence Based Standards



Guidelines and Recommendations



ISO Technical Specification on Animal Welfare : Rationale



Global Meat Trade (Source: Gira)

ISO Technical Specification on Animal Welfare: Objectives

- Provide a methodology which will enable implementation of animal welfare management principles in enterprises
- Develop an outcome based approach
- Wherever possible, develop specifications based on science
- Include all terrestrial animals in all life stages
- Encourage harmonization based on the internationally recognized standards of the OIE
- Utilize the guidelines and management principles to educate and drive implementation

Improving Animal Welfare Globally

Public Private Partnerships



Build

Support of the ISO Technical Specifications on Animal Welfare, bringing together experts globally to develop a tool for Businesses and others to implement in their operations.



Impact

Remain aligned with the standards developed in the OIE Terrestrial Code to ensure that Business Initiatives and country laws and regulations remain harmonized on animal welfare standards.



Grow

Deploy the management principles through client-supplier relationships globally and provide the educational tools where necessary.

For more information

Contact

Gary Ades, PhD

Secretariat

479.696.8189 (Office)

479.426.4467 (Cell)

gades@ssafe-food.org

www.ssafe-food.org



Thank You