

# ANIMAL WELFARE IN DISASTERS



Gary Vroegindewey, DVM, MSS, Diplomate, ACVPM

Director, Global Health Initiatives

Virginia Maryland Regional College of Veterinary Medicine



# ROLE OF ANIMALS IN SOCIETY

“When  
end for l



l, the  
ot far

# **WHY ANIMAL WELFARE IN DISASTERS?**

**To promote the physical and behavioral wellbeing of animals**

**To support humane values across stakeholder domains**

**To safeguard the health of human survivors/responders- physical and mental**

# **WHY ANIMAL WELFARE IN DISASTERS?**

**To support response effectiveness**

**To support recovery**  
**physical, economic, emotional**

**To maintain public confidence and support**



# Disaster Types

**Natural- Wide Spread**

**Environmental  
drought, flood, tsunami**

**Transboundary Infectious  
Avian Influenza, Nipah, Foot and Mouth Disease**

**Complex Humanitarian Emergency**

**Manmade- chemical/radiological**



# EFFECTIVE ANIMAL DISASTER RESPONSE

## Chengdu Panda Base Disaster Preparedness



Dr. Gary Vroegindewey, DVM, MSS, DACVPM

Director, Global Health Initiatives Center for Public and Corporate Veterinary Medicine

Virginia-Maryland College of Veterinary Medicine

# Begins with effective planning

# ANIMAL WELFARE IMPERATIVES

**OIE Standards**

**Ethical and cultural frameworks**

**Five Freedoms**

**LEGS Standards**

**Economic issues- trade, perceptions**



World  
Organisation  
for Animal  
Health



# ANIMAL CATEGORIES

Production

food animals

working animals



Companion

Wildlife





# ANIMAL CATEGORIES

Special categories

Laboratory animals

Zoo/aquatic

Endangered/ highly visible species

Search and Rescue Dogs



# ANIMAL WELFARE DIFFERENCES IN DISASTERS

Direct public involvement

Intense media scrutiny

Direct political engagement

Speed of decision making

Challenges to capacity



# DISASTER PRINCIPLES

- **Timely**
- **Appropriate**
- **Sustainable**
- **Feasible**
- **Social/Cultural Acceptability**
- **Environmentally Neutral-Enhancing**
- **Integrated Coordinated**
- **Defined Endpoint**

# ANIMAL WELFARE IN TRANSBOUNDARY DISEASE

## Livestock Owners

- More readily support depopulation activities if animals are humanely destroyed and remains handled with dignity
- Decreases probability of post event behavioral health issues
  - Post traumatic stress disorder, depression, and suicide



# OIE Guidelines

## Killing of Animals for Disease Control

### Article 7.6.1.

Animal welfare is integral to OIE guidelines and is addressed throughout the document.



World  
Organisation  
for Animal  
Health

# HUMANE DESTRUCTION AND CARCASS DISPOSITION

- **Increases Compliance**
- **Decreases disease spread**
- **Minimizes environmental impact**
- **Restores aesthetic surroundings**





The Sofia Echo

## The social and cultural impact of foot and mouth disease in the UK in 2001



Experiences and analyses

*Edited by*

**Martin Döring & Brigitte Nerlich**

# WELFARE IN NATURAL DISASTER

## DROUGHT



**Kenya- Pastoralists in the Rift Valley region moved cattle to Mt. Kenya region to pasture. Of 20,000 cattle moved approximately 100 miles only 6,500 survived.**



# LEGS



## Livestock Emergency Guidelines and Standards



### Home

LEGS in the News

About LEGS

LEGS Training Programme

Management and Funding of LEGS

The Development of LEGS

LEGS and Sphere

Download LEGS

LEGS Launch Events

LEGS Evaluation and Impact Assessment

### Welcome to the Livestock Emergency Guidelines and Standards (LEGS) website

#### Latest news from LEGS:

- Six LEGS Regional TOT courses have been completed, in the Horn of Africa, South East Asia, South Asia, West Africa and Southern Africa
- **Two more TOTs are planned for May 2011** - in Pakistan/Afghanistan and anglophone West Africa - [click here](#) to apply
- The graduates of the completed TOT courses have already carried out 29 LEGS Trainings between them, in 12 countries of Africa and Asia - [click here](#) for more details
- Twenty of these graduates are now fully accredited LEGS Trainers - see [here](#) for more
- A special LEGS Training was carried out in Pakistan to support the flood response

Order LEGS now:



[Download LEGS as a PDF file here](#)

[Download the LEGS electronic](#)

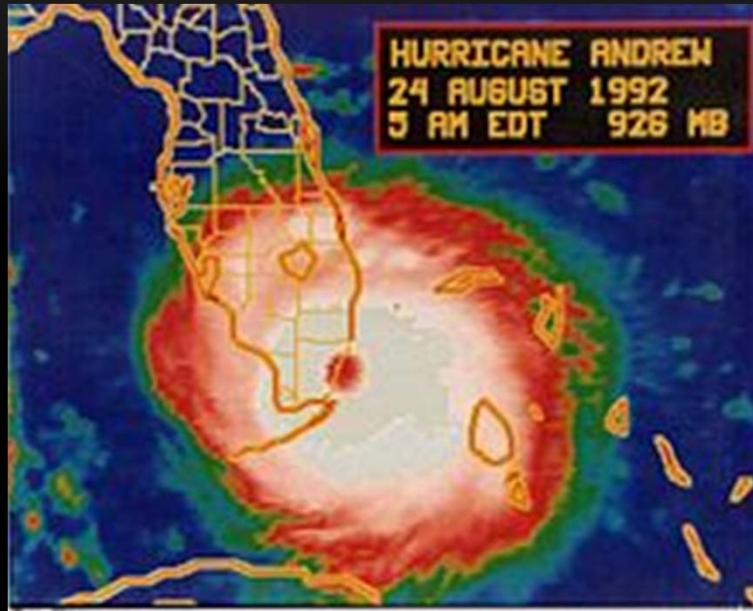
<http://www.livestock-emergency.net>

# OWNERS AND ANIMAL WELFARE IN DISASTERS

## Companion Animal Owners

- More readily support evacuation and movement when welfare of evacuated or remain-in-place animals are addressed
- Decreases probability of post event behavioral
  - health issues, post traumatic stress disorder, depression, suicide,

# HURRICANE ANDREW 1992



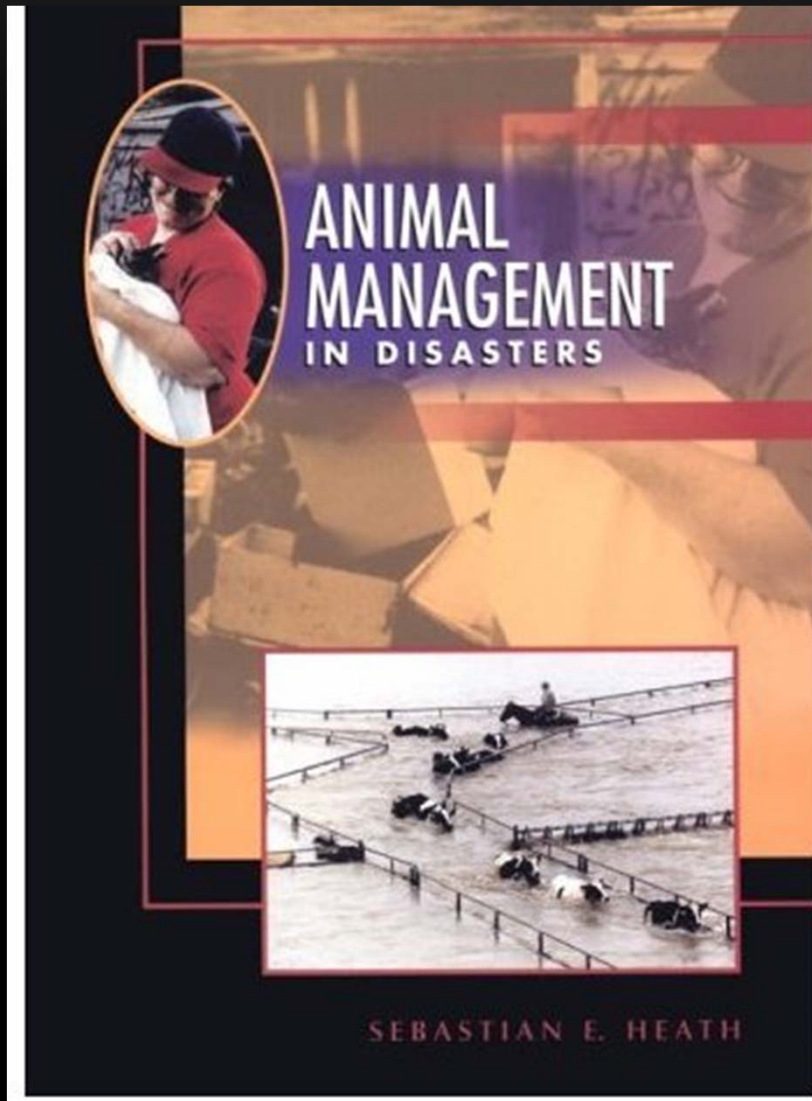
# HURRICANE ANDREW: 1992

- 100's – 1000's of displaced animals
- Large number of carcasses
- Potential zoonotic disease transmission
- Severely damaged veterinary community
- No animal disaster plan

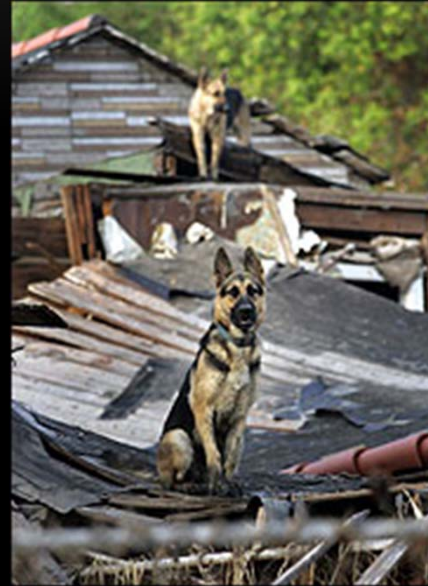


# ANIMALS IN DISASTERS

Dr. Sebastian Heath  
1999



# HURRICANE KATRINA



**PETS Act**  
**National Animal Rescue and Sheltering**  
**Coalition**

# ANIMAL SHELTERING

The National Animal  
Rescue and Sheltering  
Coalition

NARSC



- In US required by PETS Act
- Provide routine treatment
- Assist in coordination of sheltering activities

# STAKEHOLDERS AND ANIMAL WELFARE IN DISASTERS

- Donors and public stakeholders maintain the financial and political support when humane processes are followed



American Veterinary Medical Foundation



# POLITICAL AND RESPONDER LEADERSHIP

Maintains moral high ground, trust and increases response effectiveness.

Removes the distracter of addressing animal welfare issues in the face of overwhelming response and recovery issues.



# JAPAN EARTHQUAKE, TSUNAMI, NUCLEAR EVENT



# PANDEMIC AVIAN INFLUENZA



**Enemy at the gate**

Saving farms and people  
from bird flu



# CONCLUSIONS

- **Animal welfare is an critical integral element in disaster response.**
- **Addressing animal welfare issues provides benefits to both animals and society.**
- **Effective animal welfare in disasters begins with planning.**
- **OIE guidelines on animal welfare are an important tool to support effective response and maintain public trust.**





# Maori Proverb



You ask me

What is the most important thing

My reply must be

It is people

It is people

It is people





Gary Vroegindewey, DVM, MSS, Diplomate, ACVPM  
Director, Global Health Initiatives  
Virginia Maryland Regional College of Veterinary Medicine

